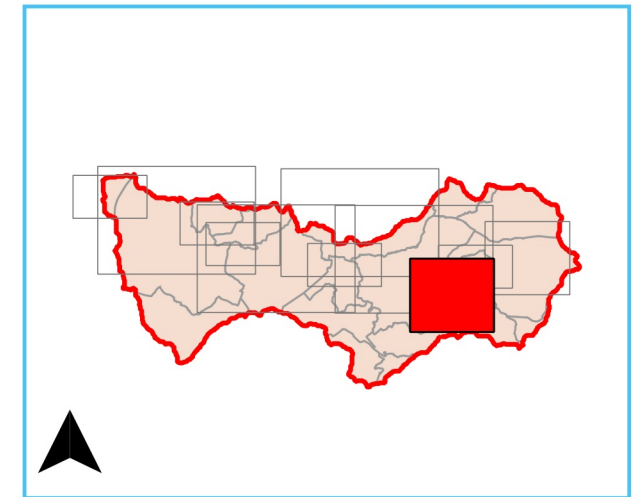











## BELLEBRUNE



### Éléments généraux

-  Limites du bassin versant
-  Limites communales
-  Lit mineur du Wimereux, de ses affluents, et surfaces en eau
-  Point de calcul de débit (en m<sup>3</sup>/s)

### Grille des hauteurs de submersion

Hauteur de submersion	Supérieure à 1,5 m	
	Comprise entre 1 et 1,5 m	
	Comprise entre 50 cm et 1 m	
	Comprise entre 20 et 50 cm	
	Inférieure à 20 cm	

Échelle : 1/ 10 000



Liberté • Égalité • Fraternité  
RÉPUBLIQUE FRANÇAISE

Système de coordonnées : Lambert 93 (RGF93)  
Projection : Lambert RGF93  
Sources : IGN, SCAN 25