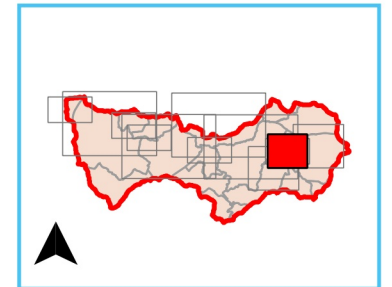











LE WAST



Éléments généraux

-  Limites du bassin versant
-  Limites communales
-  Lit mineur du Wimereux, de ses affluents, et surfaces en eau
-  Débit de pointe (m³/s) (sans déphasage temporel)

Grille des hauteurs de submersion

Hauteur de submersion	Supérieure à 1,5 m	
	Comprise entre 1 et 1,5 m	
	Comprise entre 50 cm et 1 m	
	Comprise entre 20 et 50 cm	
	Inférieure à 20 cm	

Échelle : 1/ 10 000



Système de coordonnées : Lambert 93 (RGF93)
 Projection : Lambert RGF93
 Sources : IGN, SCAN 25