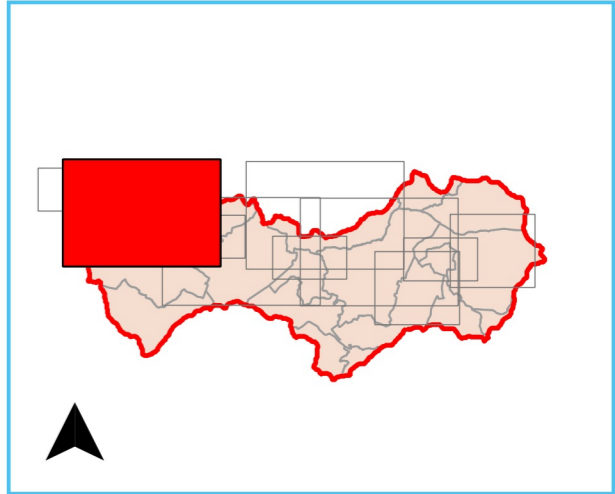











**WIMILLE**



**Éléments généraux**

-  Limites du bassin versant
-  Limites communales
-  Lit mineur du Wimereux, de ses affluents, et surfaces en eau
-  Débit de pointe (m³/s) (sans déphasage temporel)

**Grille des hauteurs de submersion**

Hauteur de submersion	Supérieure à 1,5 m	
	Comprise entre 1 et 1,5 m	
	Comprise entre 50 cm et 1 m	
	Comprise entre 20 et 50 cm	
	Inférieure à 20 cm	

Échelle : 1/ 10 000



Système de coordonnées : Lambert 93 (RGF93)  
 Projection : Lambert RGF93  
 Sources : IGN, SCAN 25

V0 juin 2015

0 250 500 m